



Announcing CableSolve 5.3

2D Barcodes, API, Attributes, Reports and Performance.

Desktop and Handheld Enhancements

Cormant Technologies announces the release of CableSolve R5.3. This version adds significantly more business functionality to the very successful CableSolve R5 product series.

2D Barcodes for instant Component Entry

The new 2D bar-code component creation function in CableSolve is a major time-saver when adding new equipment. With the scan of an XML formatted 2D barcode CableSolve can instantly add a new component to a chosen space, including any attributes. This "scan and add" can completely remove the need for manual data entry and associated potential error. The 2D bar-code ensures complete inventory control from the moment the equipment is received to its end of life. Once the 2D bar-code is initially scanned, subsequent scans are treated like a normal CableSolve scan highlighting the component.

CableSolve comes with fonts and macros for XML 2D bar-code generation. Third party solutions can also be used.



PC-20
Scan me

CableSolve Web Services API

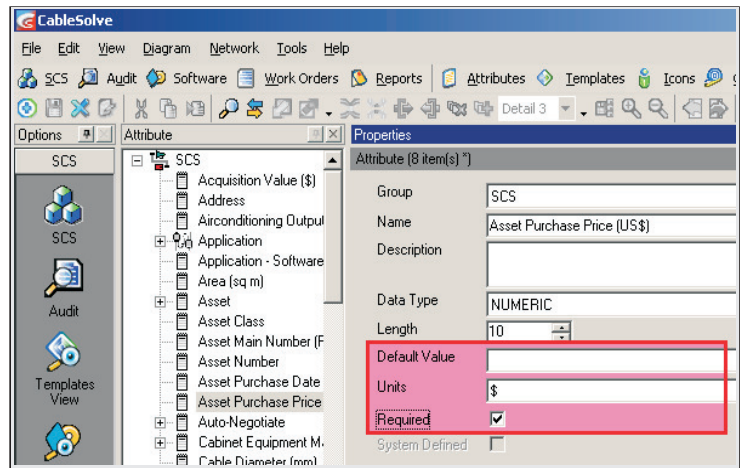
The CableSolve XML Web Services API is now extended and significantly enhanced in CableSolve 5.3. The XML API provides a fully flexible interface that greatly assists in integration with third party applications. The interface provides functionality for adding, reading, updating and deleting components, connections and work-orders. The Web Services can be accessed easily from Microsoft and Java development environments ensuring easy access from a wide array of tools and platforms.

The CableSolve web services provide verification of business rules to ensure the integrity of the CableSolve database and comes with a number of working examples.

Enhanced Attributes

The power of CableSolve's unlimited Attributes is further enhanced in this release through additional control and flexibility during data entry, updates and custom reporting.

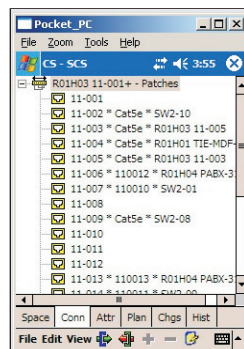
Date Attributes can now be set to "Today" ensuring that the date a component is created is recorded accurately. Any Attribute can be set to "required", forcing their completion when a component is added to CableSolve. Attributes can be set with no default value ensuring accurate information is captured during component creation. Numeric Attributes now have a "Units" field which works with the powerful new "Sum" and "Count" features of custom reports. The units value is especially useful when reporting on multiple data types in one report, whether financial, asset or operational.



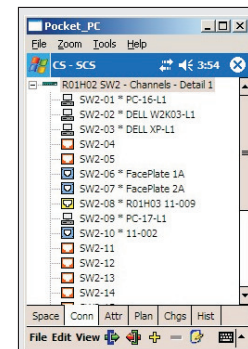
Patch Panel and Switch Connection View

Patch-view within the handheld connections screen significantly improves readability when looking at connections at the patch panel. This enhancement allows you to easily view Patch Panel port-cable-ports connections.

Switch connections view at Detail 1 now displays additional information, including the connected components icon, the switch port name and the connection component name, making switch port to end component association significantly easier than before.



Patch View



Switch View



R5.3 on the Desktop and Handheld...

2D Barcodes, API, Attributes, Reports and Performance.

Improved Custom Reports

While custom reports have always been completely configurable to ensure reporting on exactly the data required, there was no way to count the number of items in a group or perform summation of numeric values. Both of these functions are now part of custom reports.

It is now possible to optionally specify one or more Attributes to be counted in order to provide accurate totals by component or other value. One or more numeric Attributes can be selected for summation and included in custom reports. This addition now means counting the number of servers of a particular type or location is fast and simple as is reporting on total asset values or heat/power usage in a data center or in fact just about anything. All data can be exported to Excel for further detailed analysis.

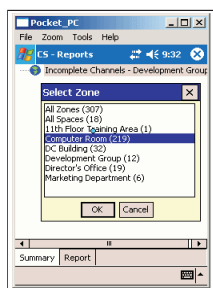
CableSolve Quick Connect™

Sometimes it is necessary to update a mass of connections, for example after a major installation or switch re-patching. With the new "Quick Connect" feature within the CableSolve handheld it is now much faster to mass update connections without using the Audit verification process which is still available for audit situations.



Audits and Handheld Reports Now by Zone

To make CableSolve reporting and auditing on the handheld faster than ever it is now possible to select a specific zone when entering the Report or Audit modules on the handheld, ensuring that only data required is loaded for report or audit purposes.



Enhanced Database Support

CableSolve database support has been extended. The CableSolve handheld subscription age is now configurable within CableSolve Server Database Configuration ensuring more control over subscriptions. SQL 2005 support is also provided.

Desktop and Handheld Enhancements

Additional Features Added to R5.3

- ❖ The CableSolve handheld now supports the temporary database file location on high speed memory cards ensuring unlimited handheld database sizes.
- ❖ Work Orders now support move by "person" allowing a single drag and drop to move a person and all their equipment, including planned disconnects, moves and re-connections.
- ❖ CableSolve now supports Windows Mobile 5 & 6 handheld devices and specifically the Symbol MC 70 scanners. CableSolve also supports installation on high speed memory cards.
- ❖ Component import now allows a qualified space to be specified when importing components. This is especially useful where a number of spaces have identical names.
- ❖ The graphical Connections view screen can now be captured for printing.
- ❖ Alert enhancements include unplanned connect and disconnect alerts.
- ❖ A robust and improved Check database program which reviews a much wider range of issues. Results can be saved in CSV format.

For more information on CableSolve 5.3, please contact your CableSolve representative or CableSolve Distributor or Business Partner.

Cormant Technologies has CableSolve business partners in Australia and New Zealand, Singapore, Asia Pacific, the United States and Canada and Europe including the United Kingdom, Italy and Ireland.

To connect with a partner please go to our web site at www.cormant.com or contact us globally on our toll free number +800 CORMANT1 (+800 2676 2681).